

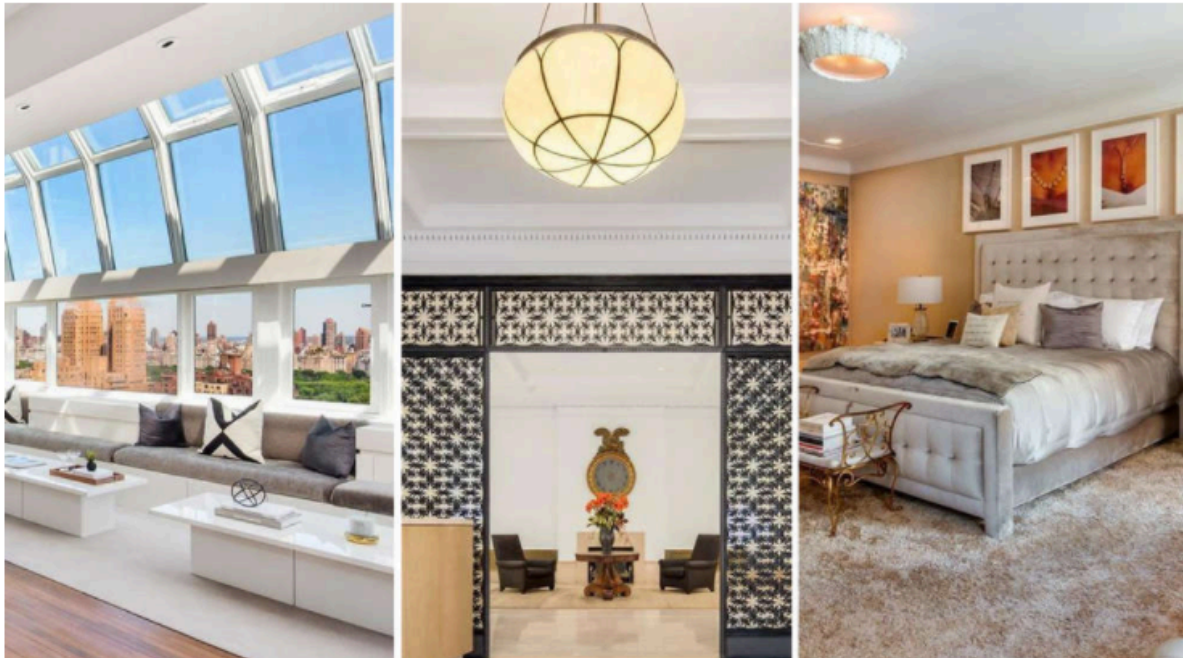


FROM **ICONIC ADDRESSES**

\$25M for Jacqueline Kennedy Onassis's Childhood Home & More of Last Week's Top Closings



BY **CITYREALTY STAFF**
WEDNESDAY, AUGUST 2, 2017



Jacqueline Kennedy Onassis's childhood home sells for \$25M

Jackie O lived at the Rosario Candela-designed 740 Park Avenue with her parents between the ages of two to seven; the four-bedroom co-op apartment sold for \$25.25 million this month. Read on to find out who bought it, and where the city's biggest sales were this week.

1. 740 PARK AVENUE, APT# 6/7A - \$25,250,000

4 Bedrooms, 6+ Bathrooms



Sold, Jul 13, 2017; Douglas Elliman



Kitchen; Douglas Elliman



Bedroom; Douglas Elliman

Jackie O lived at the Rosario Candela-designed 740 Park Avenue with her parents between the ages of two to seven. In more recent years, hedge fund manager David Ganek and his wife, avid art collectors whose collection includes works by Andy Warhol, John Baldessari, Richard Prince, Cindy Sherman, and Edward Ruscha, bought the 12-room duplex in 2005 for \$19.1 million. The four-bedroom co-op apartment sold for \$25.25 million this month to Jacob M. Safra of the billionaire Safra family, of Brazilian banking fame.

2. THE BRENTMORE, 88 CENTRAL PARK WEST, APT# 7S - \$15,500,000

3 Bedrooms, 3 Bathrooms



Sold, Jul 11, 2017; Douglas Elliman



Lobby; Douglas Elliman

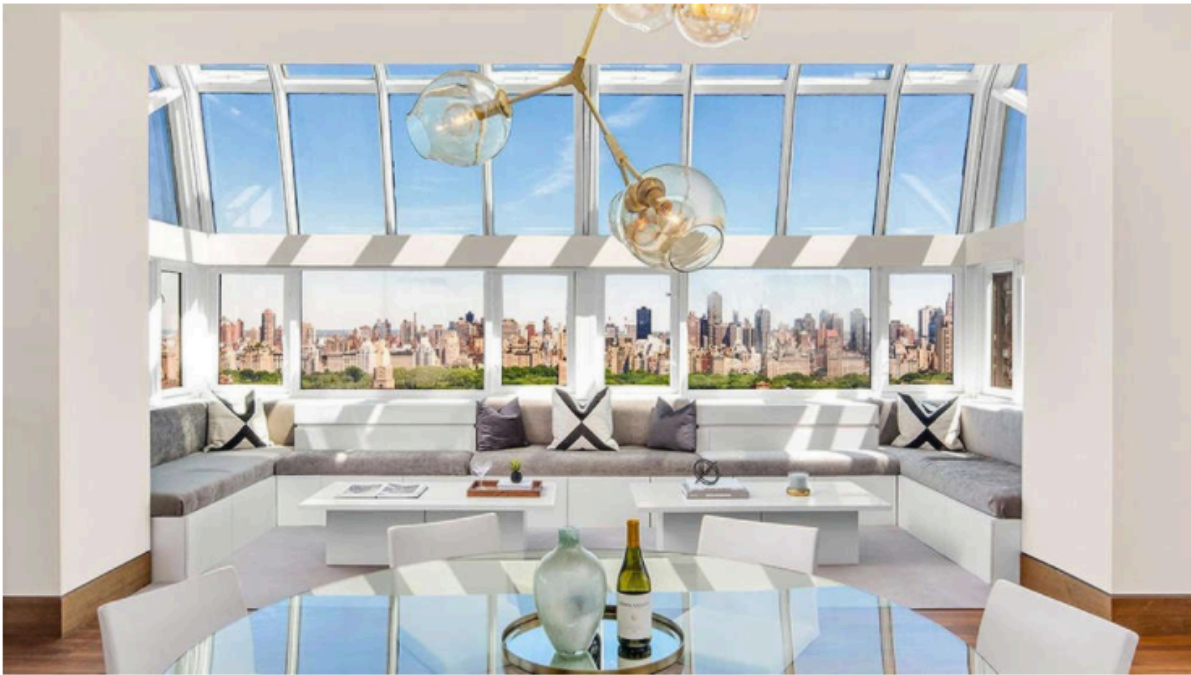


View; Douglas Elliman

This quintessential Central Park West co-op in Lincoln Square has plenty of pre-war elegance and modern luxury, with full park and cityscape views. Starting with a private elevator landing, the three-bedroom apartment features a formal mahogany-paneled dining room, a butlers' pantry with original oak cabinets, plenty of closet space including a cedar closet, French doors with leaded glass transoms and the extra bonus of large staff rooms that can be converted to a fourth bedroom.

3. THE COPLEY, 2000 BROADWAY, #PH3AB - \$11,275,000

4 Bedrooms, 3 Bathrooms



Sold, Jul 18, 2017; Douglas Elliman



Dining & Living Area; Douglas Elliman



Kitchen; Douglas Elliman

This four-bedroom penthouse atop the Copley Condominium and Club spans 4,300 square feet with 1,200 square of outdoor space on the 28th floor. The home begins with a private, windowed elevator landing with park views. The living and dining room features over 50 feet of panoramic park frontage with views elsewhere in the home that include the George Washington Bridge to the north, the Hudson River to the west and Columbus Circle and Midtown to the south. Building perks include a full-time doorman/concierge, a fitness center with a 40-foot swimming pool, a parking garage, a children's playroom, a landscaped garden, a resident's lounge and an individual storage unit.

MORE TOP CLOSINGS FROM LAST WEEK

4. 212 Fifth Avenue - Apt# 9A — Sold Jul 13, 2017 — **\$11,100,000**
5. The Shephard, 275 West 10th Street, Apt# 4C — Sold Jul 07, 2017 — **\$8,800,000**
6. 212 Fifth Avenue, Unit 17A — Sold, May 31, 2017 — **\$15,647,690**
7. 11 Beach Street, Apt# 6A — Sold Jul 07, 2016 — **\$8,706,038**
8. The Beresford, 211 Central Park West, Apt# 8E — Sold Jun 27, 2017 — **\$8,577,563**
9. The Park Laurel, 15 West 63rd Street, Apt# 28A — Sold Jul 12, 2017 — **\$8,500,000**
10. 20 East End Avenue, Apt# 6C — Sold Jun 19, 2017 — **\$7,970,861**