

Real Estate

GREENWICH TIME | GREENWICHTIME.COM | Friday, February 21, 2020 | Section R

HOT PROPERTY

Wonderful in Willowmere

Outdoor living space, amenities in 1930s-era colonial/R2



Contributed photo

A charming Dutch door leads the way to the 1930s-era colonial at 18 Tower Road in Riverside, part of the private Willowmere Association. Sotheby's International Realty listed the property for \$3.195 million.

THE LIST

Greenwich transactions

Page R6



Contributed photo

WHAT TO BUY

'Immaculate' Old Greenwich Victorian

Page R5

WHAT TO BUY



Colonial 'with everything you can wish for'

Page R5

REAL ESTATE

HOT PROPERTY

Improvements make Willowmere home wonderful

1930s-era colonial enjoys outdoor living space and association amenities



Contributed photos

Previous owners professionally landscaped the 0.47-acre lot, and added stone walls, pathways, a terrace, outdoor fireplace and pergola.

By Gretchen A. Peck

"Some of the most compelling features of 18 Tower Road are the landscaping and privacy," according to Kim Horton, a Realtor with Sotheby's International Realty in Greenwich, and the listing agent for 18 Tower Road, a 1931-era stone colonial in the private Willowmere Association. Recently listed, the property is currently on the market for \$3.195 million.

Previous owners of the property made a significant investment in the grounds, adding specimen trees, stone walls, pathways and terracing, Horton noted.

The current owners, Horton's clients, purchased the home nearly four years ago, and the condition of the home then required little improvement. However, they made a few strategic changes.

"We converted an unneeded sitting room into a garage and added a laundry room upstairs. There was only one, three floors below in the basement, previously," the seller explained. "Otherwise, the changes were cosmetic, such as repainting, or maintenance, such as replacing the dishwasher and a leaky faucet."

The floor plan incorporates 3,848 square feet of living space, with a formal dining room, formal living room, a family room with a vaulted ceiling, an eat-in kitchen, and a paneled sitting room with a brick wood-burning fireplace and nearly an entire wall of windows.

The kitchen makes efficient use of the space, with white cabinets, stainless appliances

Listing Agent: Kim Horton, Sotheby's International Realty; (203) 983-3817 office; (203) 915-9100 cell; kim.horton@sothebys-homes.com

Address: 18 Tower Road, Riverside

Price: \$3.195 million

Number of Rooms: 9

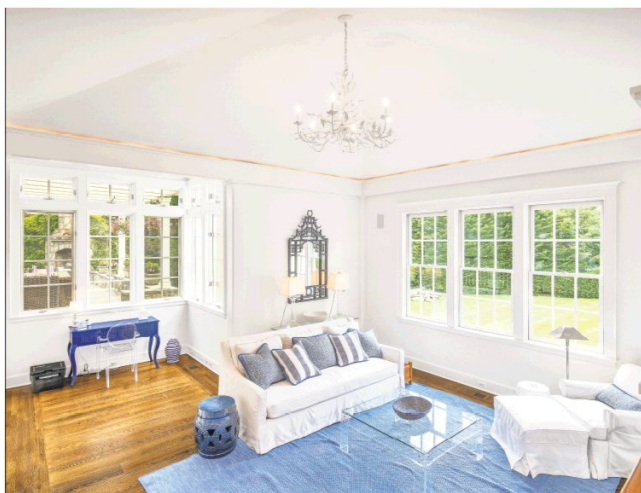
Features: The 1931-era colonial at 18 Tower Road in Riverside's Willowmere Association has 3,848 square feet of living space, four bedrooms and four baths. The stone residence, with a charming Dutch entry, enjoys a 0.47-acre lot that has been professionally landscaped and appended with stone pathways, walls, terrace, outdoor fireplace and pergola. The interiors are replete with custom decor details, including built-ins, vaulted ceilings, oversized windows, antique cypress paneling, marble-appointed baths, a custom mudroom, and banquette seating. Among the four bedrooms is a master with en-suite bath. The home has an attached garage with one bay. As part of the private Willowmere Association, this property enjoys association amenities, including a private beach and dock.

Schools: Riverside School, Eastern Middle, Greenwich High

and a clever built-in perfect for informal dining or after-school homework sessions.

"The house is charming, with built-ins in nearly every room," the seller noted, pointing out the sunny disposition, water views and the private 0.47-acre setting.

"Our favorite room, without question, is the zebra room—the sitting room with the zebra carpet," the homeowner said. "It has beautiful windows



The 3,838 square feet of living space includes formal and more intimate rooms, many of which have custom built-ins.

and doors, cypress wood paneling and built-ins. It's very cozy and where we have our fires in the colder months."

The home has four bedrooms, including a bright master with updated en-suite bath, adorned in marble and sky-lit.

Outside, the backyard terrace—appended with a fireplace and pergola—proved invaluable when the family entertained. The homeowner also recounted

fond memories of outdoor dining and lounging on the terrace while watching their children play in the yard.

"It is a wonderful feature, particularly because our property is so private," she noted.

Riverside's Willowmere Association is also very much a community, with noteworthy amenities, including a private beach and dock.

"My children probably used

the private beach more than anyone else in the neighborhood—beginning their pre-season swimming off the dock in their wetsuits, while the water was still freezing," the seller recalled.

"Willowmere is a wonderful community," the homeowner suggested to buyers. "The neighbors are friendly, and everyone is respectful. We share and enjoy this private enclave together."



A clever workspace was built into the updated kitchen. With stools, it makes for a nice place for quick, informal dining or afternoon homework sessions.



Previous owners professionally landscaped the 0.47-acre lot, and added stone walls, pathways, a terrace, outdoor fireplace and pergola.