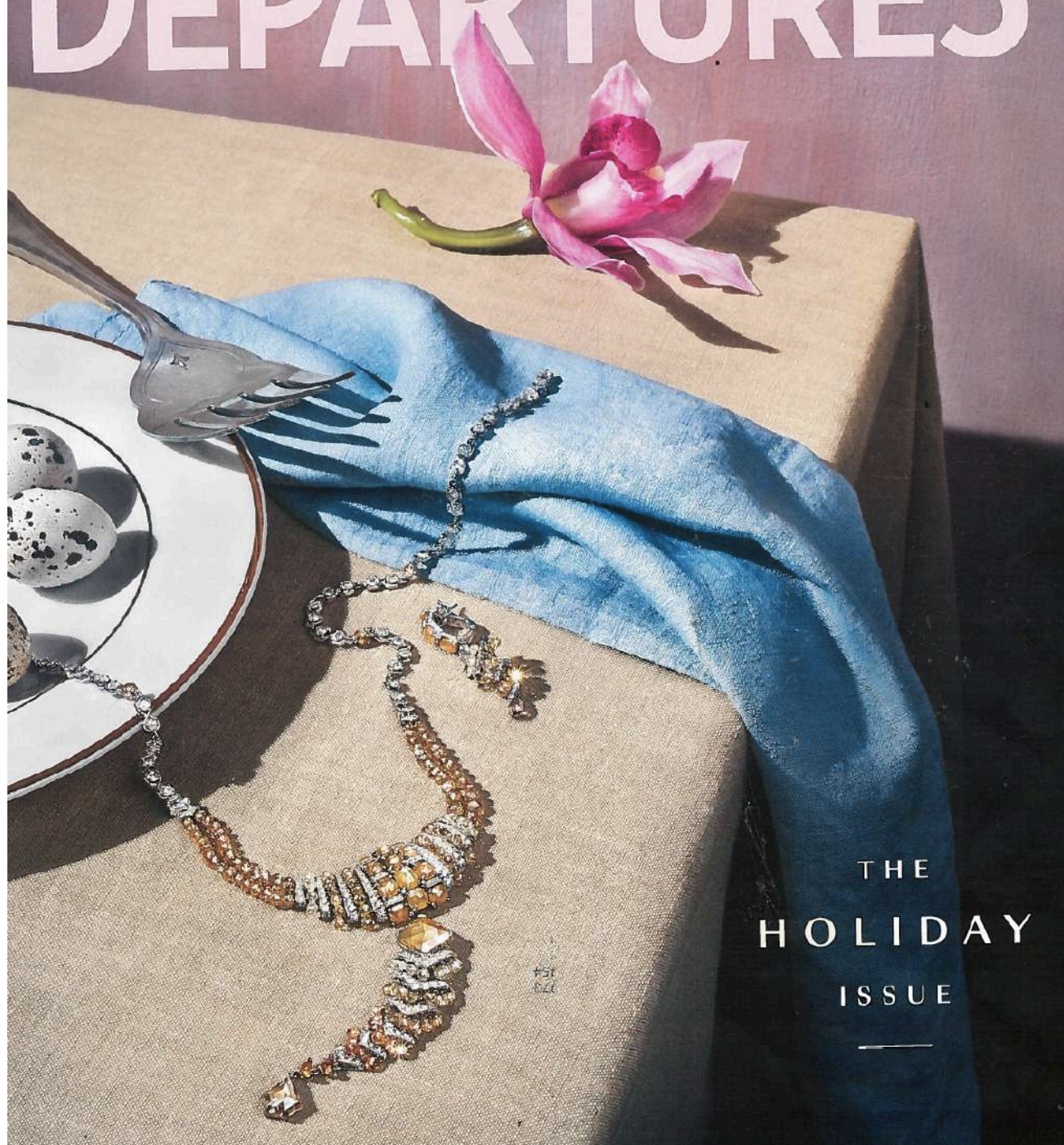


NOVEMBER | DECEMBER 2019

DEPARTURES



THE
HOLIDAY
ISSUE

LIVING



Home for the Holidays Perfect for the table or the boudoir, these thoughtful, stylish gifts will enrich any staycation with your nearest and dearest.

Photographs by Keirnan Monaghan & Theo Vamvounakis. Produced by Dan Rubinstein



MIRACLE ON 87TH STREET

New York's recently completed 555 West End Avenue was the perfect backdrop for this season's gifts. Architect Cary Tamarkin converted the 1908 Gothic-style building—a former Catholic boys' school on the Upper West Side—into 13 residences, mixing contemporary amenities with traditional layouts and details, including spacious Christopher Peacock kitchens. Decorator Charlie Ferrer, who designed the model apartment seen here, mixed unfussy vintage pieces with warm fabrics and materials (his signature). The building “makes uptown feel youthful and relevant,” he says. 555westendave.com

FESTIVE FEELINGS

Previous page: The brass candle holders by architecture and design firm **BassamFellows** reflect its midcentury modern aesthetic (\$85; bassamfellows.com). The silver-plated carafe coaster (\$216) and silver corkscrew (\$200; christofle.com) are from **Christofle's** Graphik collection. The porcelain ashtray in Garde-Robe Pop by **Hermès** is inspired by the block-printed design that was first printed on silk scarves (\$620; hermes.com). The Isla napkins in Indigo by **TOB Aero** are from the new retro-inspired accessories line by designer Thomas O'Brien (\$34 for a set of four; tobaero.com).

CAFÉ SOCIETY

Above: The Luke box from **Ralph Lauren Home** was inspired by a vintage cigarette case (\$450; ralphlauren.com). Created in collaboration with Berlin-based artist Olaf Hajek, **Diptyque's** Lucky Flowers candle (available in two other colorways) celebrates various festivals that mark the end of a year (\$72; diptyqueparis.com). The Fossil ceramic jug was made by potter Dalila Chessa, who is one of the Italian artisans represented on shopping site **Artemest** (\$290; artemest.com). The hand-painted creamware cups and saucers were designed by photographer Martyn Thompson for British brand **1882 Ltd.** (from \$70; 1882ltd.com). **Café**

Warshafsky is a Manhattan-based brand that offers shortbreads in such flavors as rose water, lavender and coconut, and Earl Grey in a variety of assortments (from \$22; cafewarshafsky.com). The S Monogram Soho notebook is from **Smythson** (\$260; smythson.com). A brass magnifying glass by **TOB Aero** (\$42; tobaero.com) sits on **Fabien Baron: Works 1983–2019**, a retrospective of 30-plus years of work by one of the world's most prominent art directors (\$200; phaidon.com). A visual biography, **Lucian Freud: A Life**, features unpublished photographs of the painter (\$200; phaidon.com).



SLICE OF HEAVEN

The small and large Polka-Dot *donabes* are by Japanese artist Mariko Ijuin for **RW Guild**, the retail shop of interiors firm Roman and Williams (from \$260; rwguild.com). Martyn Thompson designed the pitcher (\$56) and teapot (\$150; 1882ltd.com) for **1882 Ltd.** The F4 Handmade Chef Knife, with a Micarta handle in brass and leather, was created by

Florentine Kitchen Knives, in Barcelona, which specializes in custom cutlery (from \$255; florentinekitchenknives.com). The medium-sized stainless steel Frequency bowl by L.A. decor guru Kelly Wearatler for **Georg Jensen** was inspired by ocean waves (\$95; georgjensen.com).



THE SOFT SELL

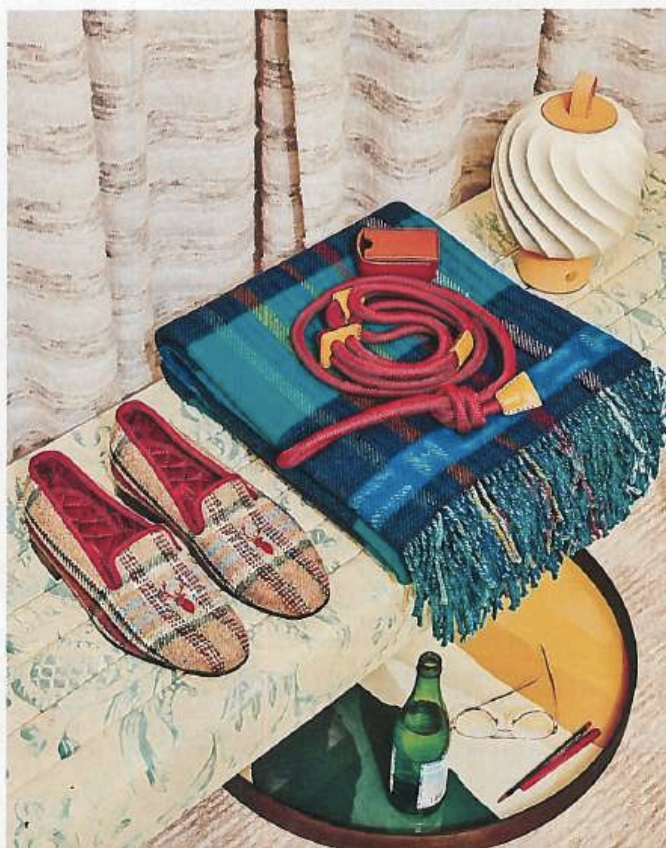
The **Foscarini** Light Bulb table lamp is by James Wines, an American artist and architect known for environmental design pieces (\$469; store.moma.org). The hand-blown Blossom vase for **Louis Vuitton** was conceived by Tokujin Yoshioka, a Japanese designer who plays with the effects of

light (\$4,400; louisvuitton.com). A rose-print porcelain box (\$590) and Game wool throw (\$980; gucci.com) are by **Gucci** and the alpaca throw is from **Brunello Cucinelli** (\$1,795; brunellocucinelli.com). **Sferra**'s Viaggio alpaca travel set in Mocha includes a throw and eye mask (\$492; sferra.com).

READY FOR ANYTHING

Savile Row outfitter **Huntsman**, known for made-to-measure tailoring since 1849, makes bespoke cashmere tweed slippers (from \$618; huntsmansavilerow.com). The dog harness of silk-rayon rope (\$129) and leather Toto Bag container for waste bags and treats (\$59; boo-oh.com) are from **Boo Oh**. The wool jacquard blanket is by **Hermès** (\$900; hermes.com). The porcelain Ice Cream lamp in Nude by **Lladro** is rechargeable via USB (\$750; lladro.com). The Wabi Sabi glass tray by **Notre Monde** is trimmed in wood (\$269; notremonde.com).

.com) are from **Boo Oh**. The wool jacquard blanket is by **Hermès** (\$900; hermes.com). The porcelain Ice Cream lamp in Nude by **Lladro** is rechargeable via USB (\$750; lladro.com). The Wabi Sabi glass tray by **Notre Monde** is trimmed in wood (\$269; notremonde.com).





NO ROOM FOR LEFTOVERS

The high-protein, low-carb cereals by **Magic Spoon** are available in flavors like cinnamon and cocoa (\$39 for a case of four boxes; magicspoon.com). The children's porcelain Circus dessert plate (\$115) and cereal bowl (\$150 each or \$560 for a set of four; hermes.com) are by **Hermès**. Muir, the first flatware from **Heath Ceramics**, is handmade in upstate New York (\$98; heathceramics.com). **Puiforcat** made the silver-plated spice mill, which is part of the Granville collection (from \$1,100; neimanmarcus.com). The Time Swirl XXL 90-minute hourglass is by the Danish ultra-contemporary

furniture and accessories brand **Hay** (\$45; hay.com). Architect David Chipperfield's Moka for **Alessi** reenvisioned the classic Italian coffee maker (\$55 for a six-cup; alessi.com). The Burleigh Garden Vine dinner (\$38) and salad plates (\$34; ralphlauren.com) are from **Ralph Lauren Home**. Linen Festival table napkins in Butter and Clover are by **Sferra** (\$57 for a set of four; sferra.com). The St. Regis Midnight Supper Set by **Saint-Louis** includes five mismatched crystal glasses, two of which are shown (\$2,300 for the set; neimanmarcus.com).