

# Real Estate

GREENWICH TIME | GREENWICHTIME.COM | Friday, February 11, 2022 | Advertising Feature | Section R

LUXURY LIVING

## Romance, right at home/R6

Architectural and design features create ambiance for amorous occasions



Contributed Photo

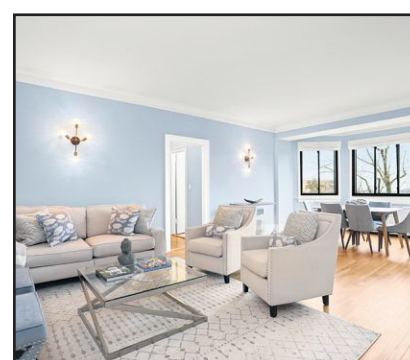
This elegant and romantic butterfly staircase is just one example from a long list of romantic attributes at 20 Sherwood Avenue, a six-bedroom brick-and-limestone manor on 4.02 acres. This is a space where memories are made. The property is listed by Sotheby's International Realty for \$7.85 million.



WHAT YOU CAN BUY: GREENWICH

**3-bedroom townhouse near Byram Park/\$510,000**

Page R10



WHAT YOU CAN BUY: GREENWICH

**One-bedroom renovated condo/\$550,000**

Page R10

**Sotheby's**  
INTERNATIONAL REALTY

PRESENTED BY  
**JB Edwards**

## Exceptionally Rare Intracoastal West Palm Beach, Florida



Extraordinary 283 feet of frontage on South Flagler Drive - two parcels offered together. Properties span a block bounded on the north by Summa Street and the on the south by Seville Road. Over an acre of opportunity for a family compound with home, guesthouse, pool, clay lighted tennis courts and outdoor gazebo kitchen already in place. The north parcel has unobstructed Intracoastal views looking across the Flagler waterfront promenade and Summa Beach Park.

**\$22,00,000 | southflaglerdrive.com**

Contact me for selling, buying & leasing in Palm Beach

**JB**  
Edwards



Global Real Estate Advisor  
Broker Associate  
561.370.4141  
james.edwards@sothebys.realty  
jbedwardssirpb.com

PALM BEACH BROKERAGE | 340 ROYAL POINCIANA WAY, PALM BEACH, FL 33480 | 561.659.3555 | SOTHEBYSREALTY.COM

© 2022 Sotheby's International Realty. All Rights Reserved. The Sotheby's International Realty trademark is licensed and used with permission. Each Sotheby's International Realty office is independently owned and operated, except those operated by Sotheby's International Realty, Inc. The Sotheby's International Realty network fully supports the principles of the Fair Housing Act and the Equal Opportunity Act. All offerings are subject to errors, omissions, changes including price or withdrawal without notice.



NOTHING COMPARES



## REAL ESTATE

## LUXURY LIVING

# Romance, right at home

Architectural and design features create ambiance for amorous occasions



Contributed photo

This fieldstone fireplace at 8 Dewart Road, Greenwich, provides a sweet spot to snuggle up on Valentine's Day, or any day. The property is currently listed for \$8.495 million.

By Gretchen A. Peck

St. Valentine's Day is upon us, stirring up romance and expressions of love across Greenwich. The past two years of pandemic have prompted couples and lovers-to-be to get creative about celebrating the holiday, proving that you need not leave home to create a truly special and romantic experience for the one you love.

Greenwich Time reached out to local Realtors about how a home can be the perfect setting for the holiday. Take, for example, the 12,402-square-foot brick-and-limestone manor at 20 Sherwood Avenue in Greenwich. This is an inherently romantic luxury home, evident the moment you enter the front door. Imagine, before you, a grand entry hall, with a sparkling chandelier overhead, and a grand butterfly staircase leading up to the second-level landing. It is a space for making memories — a bride descending the staircase on her wedding day, a place to capture family photos, perhaps. But it could also be a patently romantic spot for dancing, with a string quartet on the landing above.

"The bar and great room can be amazingly romantic — soft lights, soft music, and the beautiful yellow-on-onyx bar lit," Fran Ehrlich explained. Ehrlich is a Realtor with Sotheby's in Greenwich, and along with her colleague, Helene Barre, are the co-listing agent for 20 Sherwood Avenue, currently on the market for \$7.85 million. "The center of the room offers a wonderful dance floor, with large French doors to the grand terrace and pool. On a summer's evening, the ambiance can flow from inside to outside and back," Ehrlich suggested.

The primary bedroom suite — one of six bedrooms this home affords — is decidedly romantic, as well. "The fireplace in the primary bedroom sitting area is crafted out of an incredible turquoise marble," Ehrlich noted. "The high-ceilinged bedroom opens to a beautiful terrace overlooking the pool and back of the property. Champagne by the fire and dancing for two on the terrace!"

"It really is the perfect

place for family gatherings," co-listing agent Barre said. "It has that beautiful room with a full, lighted bar, the fireplace and view, a pond and an old stone bridge. Everything about this property says 'family' and also 'romance.'" She also pointed out the home's sound system doesn't impede the visual aesthetics; the speakers are cleverly hidden from view.

"The ambiance is quite remarkable," Barre concluded.

Douglas Elliman Realtor Monica Webster said some of the most romantic features in Greenwich's luxury homes are wine cellars with intimate tasting rooms, outdoor hot tubs, sparkling pools with spectacular views. Webster envisioned at-home date nights with home features like fireplaces and bars, saunas and soaking tubs built for two. Currently, Webster is the listing agent for 103 South Lake Drive in nearby Stamford, a property she said is perfectly romantic. It has a pool and hot tub overlooking the lake, and a 2,300-bottle wine room for special-occasion vintages. Webster is hosting an open house at the property, listed for \$3.2 million, this Saturday, Feb. 12, from 1-3 p.m.

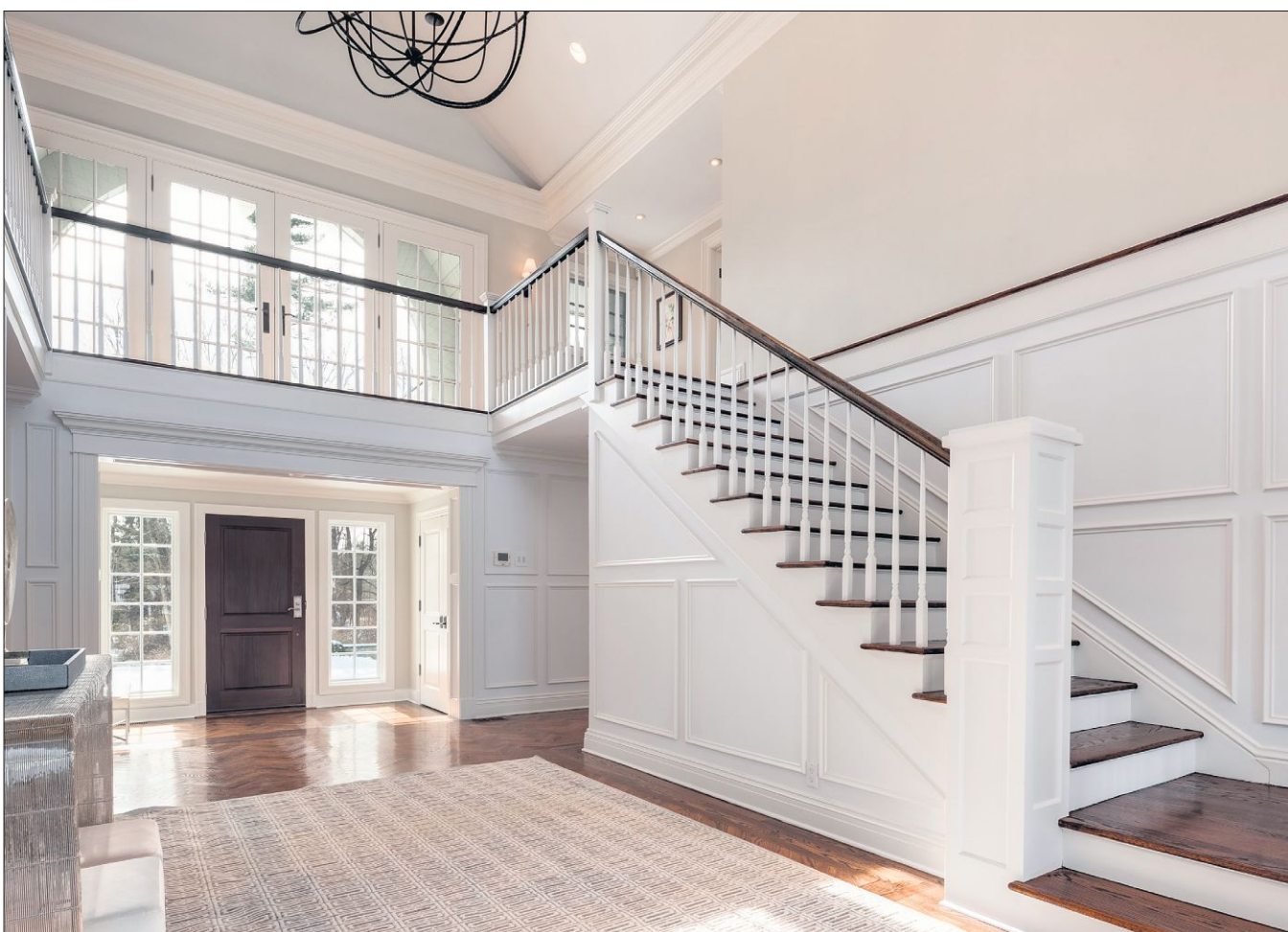
Listed for \$4.795 million by Ellen Mosher of Houlihan Lawrence in Greenwich, the six-bedroom 1913-era home that's been completely renovated and redesigned by Austin Patterson Disston's team. The house sits high on 1.08 acres that have been manicured and landscaped. Among the grounds are several stone terraces and dining gardens. Inside the home, there are two cozy fireplaces for quality cuddle time.

Situated on 2.71 acres, down a long, gated tree-lined drive is 8 Dewart Road, Greenwich, a seven-bedroom residence that its listing agents refer to as "a perfect home." Jen Danzi and Tamar Lurie of Coldwell Banker Realty represent the seller of the property, listed for \$8.495 million. Among its most romantic features are a grand entry hall with a second-level balcony overlooking the double-height space; a heated pool and spa, with a cabana; gorgeous gardens and stroll-worthy grounds.



Contributed photo

French doors open out to one of several entertaining and dining terraces at 151 Indian Head Road, Riverside. Situated among gardens and lush lawn, it's a lovely place to dine with that special someone, when the temperatures warm again.



Contributed photo

Coldwell Banker Realty in Greenwich represents the seller of 8 Dewart Road, Greenwich, a seven-bedroom 8,315-square-foot luxury home. Just inside the main entrance is this expansive entry hall with a front-to-back perspective. Imagine rolling up the rug and sharing a dance with your sweetheart here.